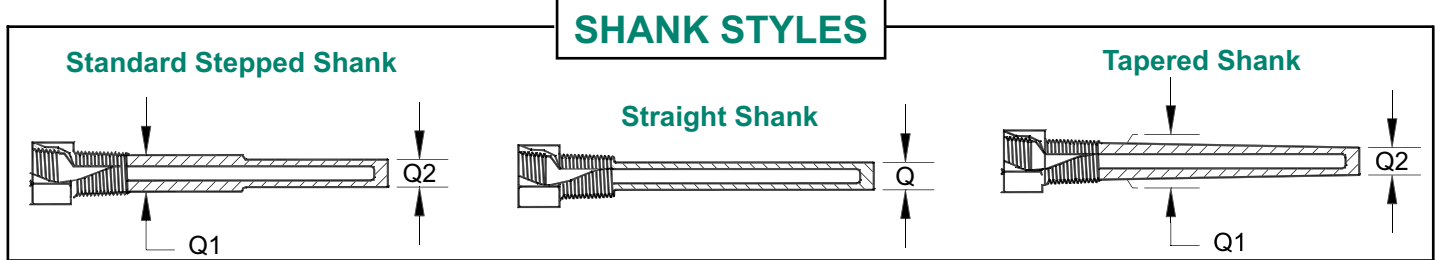
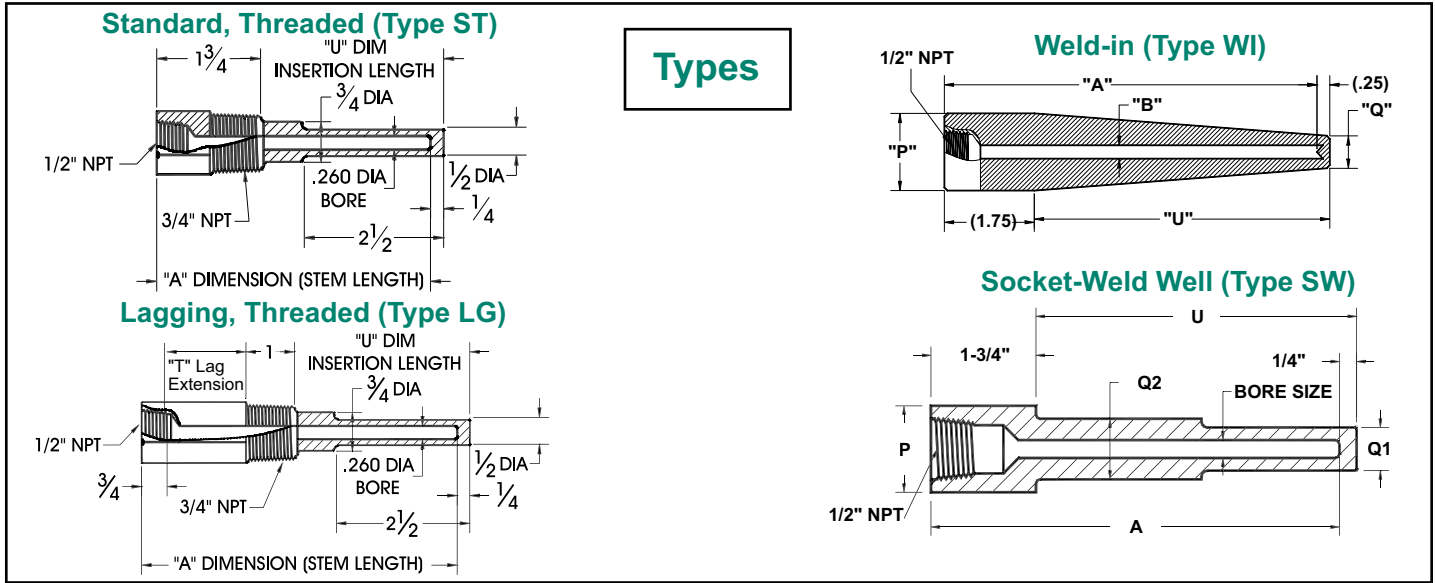


Thermowells Threaded, for Bimetal Thermometers

Thermowells make it possible to remove instrument without dropping pressure or losing contents. Each stainless Thermowell die stamped with type of material from which it is made.



How to Order



Options

Type	Stem Length "A"			Material	External Thread	Shank	Bore Dia.
ST = Threaded	2 = 2.5"			304 = 304 SS	For Threaded Wells Blank for std. (3/4" NPT) " " = 3/4" NPT (std) -1 = 1" NPT H = 1/2" NPT 4 = 1/4" NPT -2 = 1.5" NPT	Blank for std. (stepped) " " = Stepped (std.) T = Tapered S = Straight	
LG = Threaded Lagging	4 = 4"			316 = 316SS/316L			
SW = Socket Weld	6 = 6"			B = Brass			
SWL = Socket Weld w/ lag	9 = 9"			C = Carbon Steel (1018)			
WI = Weld-in	12 = 12"			G = Hast B			
WIL = Weld-in w/lag	2.0 = 2"			H = Hast C	For Socket Weld and Weld-in wells Blank for std. (3/4" pipe) " " = 3/4" pipe nominal (1.050" OD)-std P1 = 1" pipe nominal (1.315" OD)	Bore Diameter Blank for std. (.260 Bore) " " = .260 (std.) B3 = .385 B5 = .515	
Standard Dimensions				M = Monel/A400			
Stem "A"	Std. "U" Dim.	Lagging "U" Dim.	Overall Length	T = Titanium			
2 1/2"	1 5/8"	---	2 7/8"	Y = Inconel			
4"	2 1/2"	---	4 1/4"	A = Alloy 105 Carb. Stl.			
6"	4 1/2"	2 1/2"	6 1/4"	2 = Alloy 20			
9"	7 1/2"	4 1/2"	9 1/4"	5 = F5 Alloy			
12"	10 1/2"	7 1/2"	12 1/4"	P = PTFE Coated 316SS			
				N = F22 Alloy			

REOTEMP INSTRUMENT CORPORATION

Telephone: (800) 648-7737 FAX (858) 784-0720 • sales@reotemp.com • www.reotemp.com



Thermowells Flanged Types



How To Order

05 — **1** — **R** — **2** — **S** — **T** — **U020** — **L042**

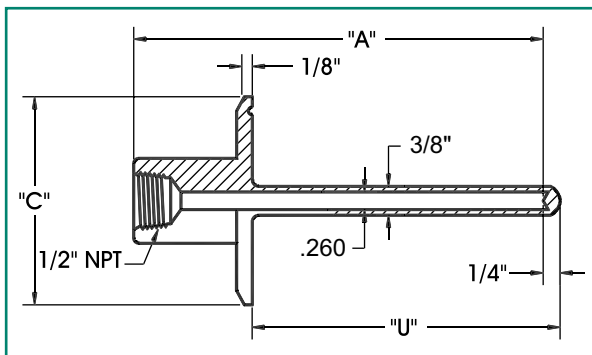
Flange Size	Flange Rating	Sealing Face	Bore Diameter	Material	Shank Style	"U" Dimensions	Overall Length
05 = 1/2" 10 = 1" 15 = 1.5" 20 = 2" 25 = 2.5" 30 = 3" 07 = 3/4"	1 = 150# 3 = 300# 6 = 600# 9 = 900 - 1500# 5 = 2500# V = VanStone	R = Raised Face F = Flat Face J = RTJ (Ring type joint) Q = Other (Specify)	2 = .260" (for 1/4" stem) 3 = .385" (for 3/8" stem) Q = Other (Specify)	S = 316SS F = 304SS C = Carbon Stl. D = Carp. 20 G = Hast B H = Hast C (276) L = F 11 Alloy M = Monel Y = Inconel (600) U = Tantalum Lined Z = Zirconium (316 flg) V = 317SS T = Titanium	T = Tapered S = Straight P = Stepped R = Tapered w/ support ring Q = Other	U020 = 2" U040 = 4" U070 = 7" U100 = 10" U130 = 13" U160 = 16" U220 = 22" U225 = 22.5" M250 = 250mm	L042 = 4.25" L062 = 6.25" L092 = 9.25" L122 = 12.25" L152 = 15.25" L182 = 18.25" L242 = 24.25" L247 = 24.75" M307 = 307mm
				K = 316/ Stellite coating 2 = Alloy 20 5 = F5 Alloy N = F22 Alloy P = PTFE coated 316SS		Note: std. overall length for a given "U" is on same line.	

Thermowells Sanitary Thermowells



Features

- Provides Sanitary Protection for Temperature Probes
- All 316L Stainless Steel Construction
- Fast Installation & Removal
- Ideal for Food, Beverage, Biotech & Pharmaceutical Applications
- Finish Exceeds Ra 32 max. (finer finishes available)
- Exceeds 3A #4 Finish



How To Order



Tri-Clamp Size	"A" Stem Lengths	Part No.	"U" Dim	"C" Dim (Flange Dia.)
1 1/2"	2 1/2"	STF1.5-2.5	1 5/8"	2.0" (51mm)
	4"	STF1.5-4	2 1/2"	
	6"	STF1.5-6	4 1/2"	
	9"	STF1.5-9	7 1/2"	
2"	2 1/2"	STF2-2.5	1 5/8"	2.5" (63mm)
	4"	STF2-4	2 1/2"	
	6"	STF2-6	4 1/2"	
	9"	STF2-9	7 1/2"	
2 1/2"	2 1/2"	STF2.5-2.5	1 5/8"	3.0" (76mm)
	4"	STF2.5-4	2 1/2"	
	6"	STF2.5-6	4 1/2"	
	9"	STF2.5-9	7 1/2"	
3"	2 1/2"	STF3-2.5	1 5/8"	3.6" (91mm)
	4"	STF3-4	2 1/2"	
	6"	STF3-6	4 1/2"	
	9"	STF3-9	7 1/2"	